

FLOOR PLANS

# B O U R N

74,586 SQ FT OF HIGH QUALITY  
GRADE A OFFICE SPACE



YOUR NEW HQ IN THE HEART OF THE CITY

1 MANOR HOUSE DRIVE  
COVENTRY CV1 2TG

# FLOOR PLANS

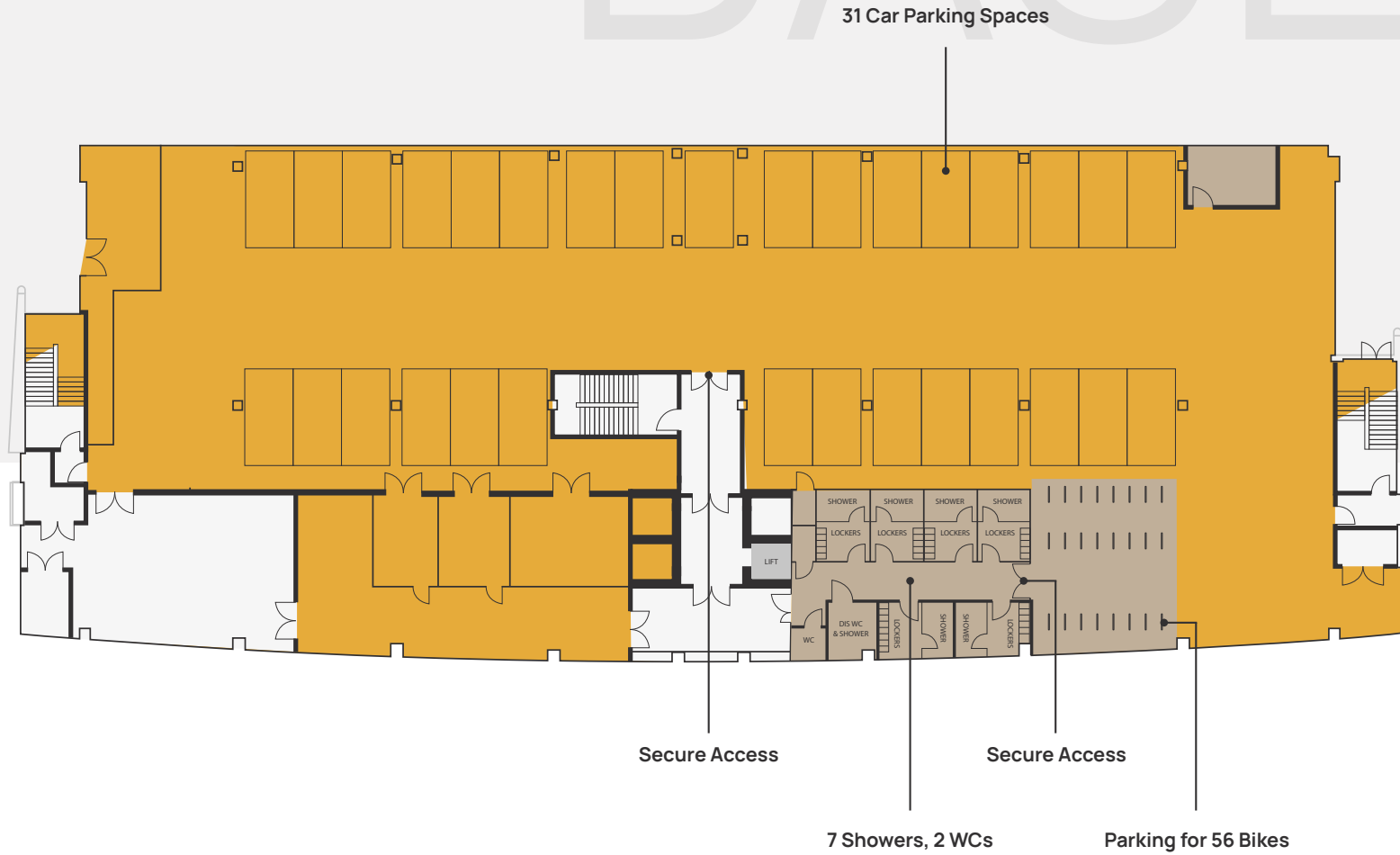
	OFFICE SQ FT		OFFICE SQ FT
5 <sup>TH</sup> Right	6,734	1 <sup>ST</sup>	15,081
<sup>2</sup> 4 <sup>TH</sup>	15,355	G Right	6,725
3 <sup>RD</sup>	15,350	B (Includes wellbeing and cycle hub)	
2 <sup>ND</sup>	15,341	TOTAL	74,586

**BASEMENT FLOOR PLAN**

Wellbeing and cycle hub

BASEMENT

3



BUILDING

GROUND FLOOR PLAN (RIGHT)

6,725 sq ft

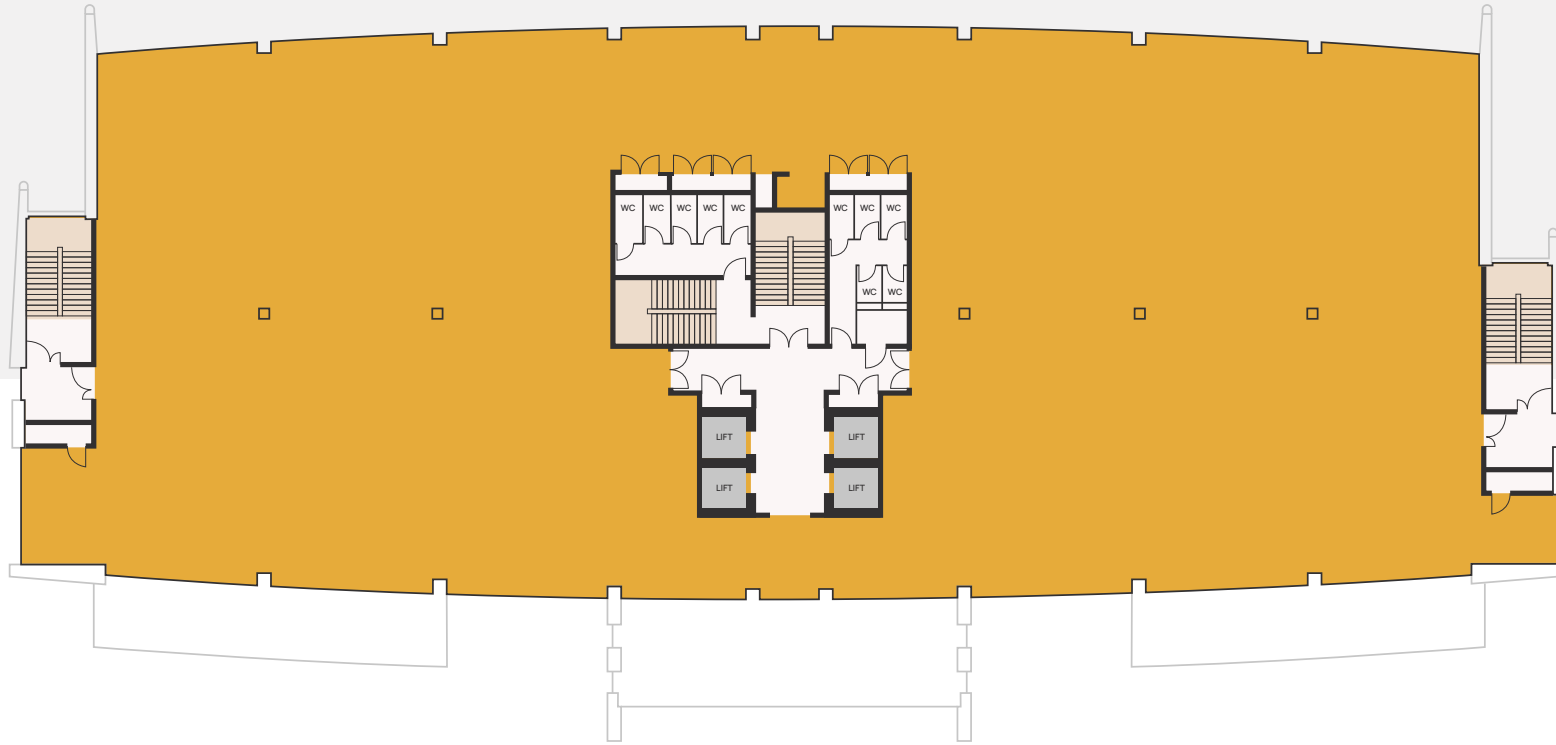


GROUN

BUILDING

FIRST FLOOR PLAN

15,081 sq ft



5

FIRST

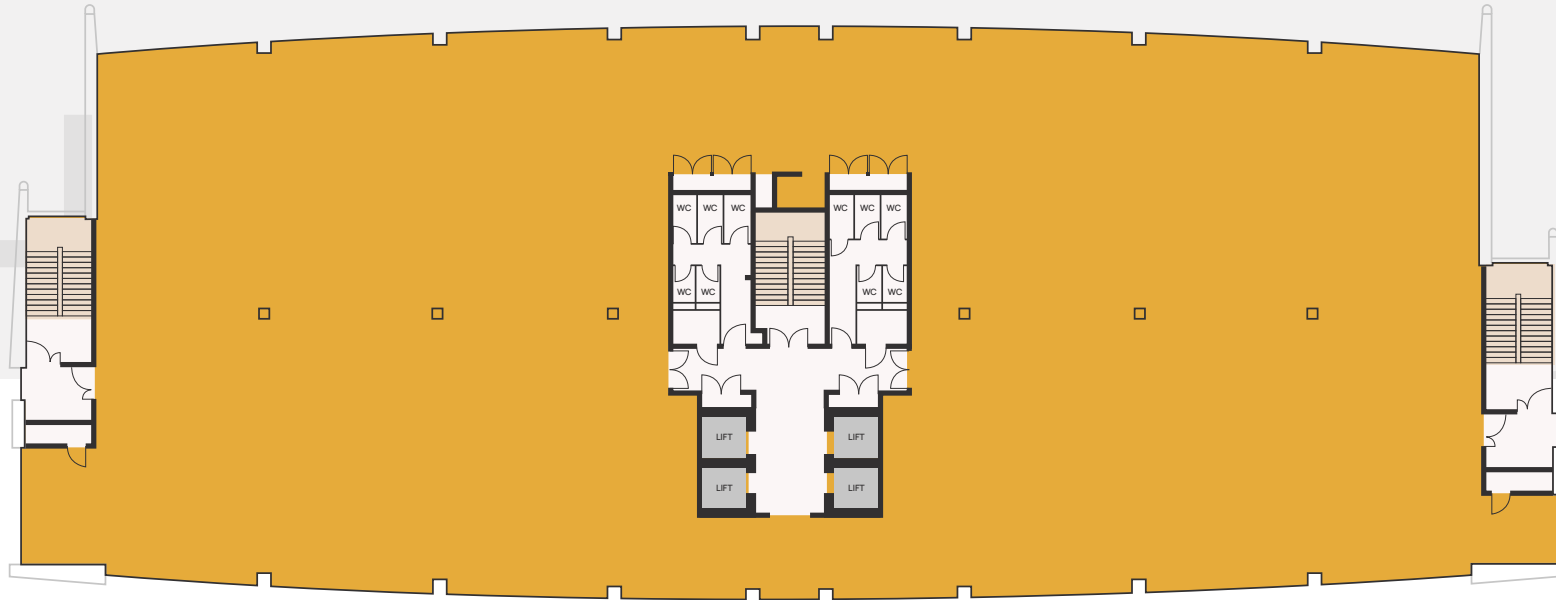
ROUNDR

SECOND, THIRD & FOURTH FLOOR PLAN

2nd floor: 15,341 sq ft

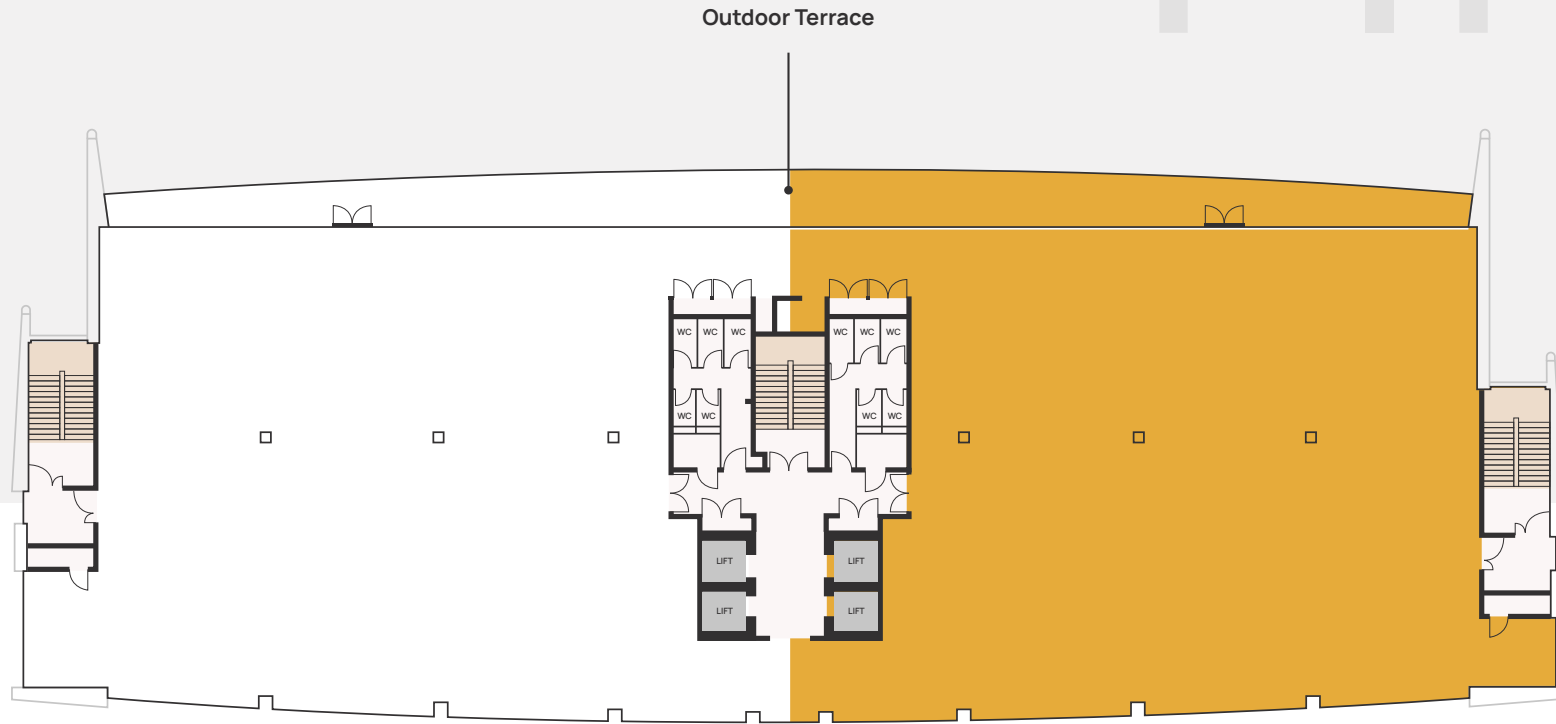
3rd floor: 15,350 sq ft

4th floor: 15,355 sq ft



FIFTH FLOOR PLAN (RIGHT)

Offices 6,734sq ft



BE THE FIRST

# B O U R N

---

**CBRE**

**WILLIAM VENTHAM**

[William.Ventham@cbre.com](mailto:William.Ventham@cbre.com)

07786 236 090

**MICHELLE MILLS**

[michelle.mills@cbre.com](mailto:michelle.mills@cbre.com)

07733 314 585



**TOM BROMWICH**

[tom.bromwich@bromwichhardy.com](mailto:tom.bromwich@bromwichhardy.com)

07918 037 150

**SAM COOPER**

[sam.cooper@bromwichhardy.com](mailto:sam.cooper@bromwichhardy.com)

07973 632 353

Development by



**IM PROPERTIES**

---

CBRE and Bromwich Hardy for themselves and for the vendors or lessors of this property whose agents they are give notice that: (i) the particulars are set out as a general guideline only for the guidance of intending purchasers or lessees and do not constitute, nor constitute part of an offer or contract. (ii) all descriptions, dimensions, references to condition and necessary permission for use and occupation, and other details are given in good faith and are believed to be correct but any intending purchasers or tenants should not rely on them as statements or representation of fact but satisfy themselves by inspection or otherwise as to the correctness of each of them. (iii) no person in the employment of CBRE and Bromwich Hardy has any authority to make or give any representation or warranty whatever in relation to this property. (iv) all rentals and prices are quoted exclusive of VAT. September 2023.

Crafted by **CAB Property**